

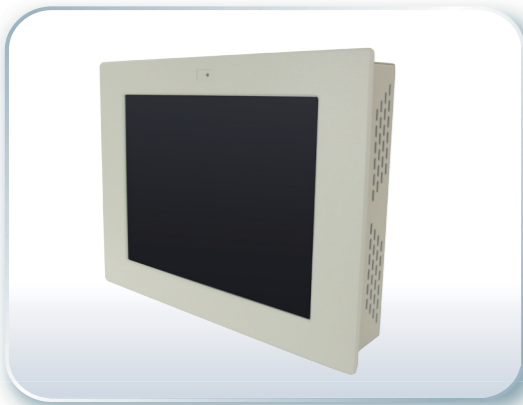
Features



- 12.1" TFT LCD with resolution of 800x600
- Auto-Dimming (optional)
- NEMA 4/IP 65 compliant front bezel
- Rear OSD
- VESA 75-75 and panel Mount
- Front glass with anti-Reflection, optional touch screen
- AC 100-240V power input, DC 11~32V for option
- VGA input, Optional for DVI, Video and S-Video input



Dimension



Specifications



LCD

Display Type	12.1" TFT- LCD
Max. Resolution	800x600
Max. Color	16.2M
Luminance (cd/m ²)	1000 nits
View Angle	H:140° / V:110°
Backlight Lifetime	50,000 hrs

System

On Screen Display Control	On the rear side (Auto-Dimming by Auto + Menu key and will be disabled when user adjust brightness manually)
External I/O Port	Standard I/O: 1 x VGA input 1 x AC 100~240V Power Input Optional I/O: DVI Video S-Video Touch I/O DC 11~32V
Power Input	AC 100~240V input, DC 11~32V for option
Touch Screen	Resistive Type
Light Transmission	80%

Mechanical

Construction	Steel
IP Rating	Front Panel IP65
Mounting	Panel / VESA 75x75 Mount
Dimension	340(W) x 260(H) x 59(D) mm
Net Weight	4.14kgs

Environmental

Operating Temperature	0~50 °C
Storage Temperature	-20~60 °C
Storage Humidity	10~90% @40 °C non-condensing
Certificate	CE/FCC Class A

